

Statement of Concern

Regarding the Star Lake Resort & Casino

BACKGROUND: Last fall the White Earth Nation (WEN) announced a plan to expand its operations by building the Star Lake Resort & Casino, to be located in the vicinity south & east of the intersection of Cty. Hwy. 41 & 380th St.. Start of construction is projected for Fall 2016, with a projected opening in Summer-Fall 2017.

This site was selected because the U.S. Gov. holds in trust for the WEN, 14.6 acres of land bordering the south arm of Star Lake. Accordingly, WEN has the right to develop gambling operations there, i.e. a casino - via the terms of at least 3 federal/state agreements dating back to 1855. In 2015 the WEN also acquired approx. 255 acres of adjoining land which provides for approx. 5,500 combined feet of lake frontage on the both the south arm and the main body of Star Lake.

PROJECT DESCRIPTION: The initial phase of the proposed complex will likely include: a casino with 10-12 gaming tables & 750 slot machines, three restaurants, an event center, 25 site RV park, a 200 room hotel, and a large indoor/outdoor swimming pool. Additional support facilities, waste water treatment plant, electrical sub-station, gas station-convenience store, etc. will likely be built on out-lying property.

Environmental Issues need to be properly addressed

The sheer size and nature of this development raises multiple environmental concerns – some of which are:

- Threat to waters from Wastewater Treatment & Storm Water Runoff,
- Threat to centuries old wild rice beds, a key hub to vital ecosystems,
- Threat to birds & wildlife; many species are especially sensitive to disturbance,
- Threat to fishing; both north & south exposures to Star Lake traditional spawning areas,
- The likely increased boat traffic will bring increased safety & AIS issues,
- Threat of Noise & Light Pollution, degraded Water Quality, and potential harm to Wetlands poses significant impacts to fish, waterfowl, wildlife, and human quality of life on Star Lake,

Whether you like to hunt, fish, swim, or simply view wildlife; and value clean safe drinking or surface water, the potential threats detailed above hopefully are both alarming and a call to action.

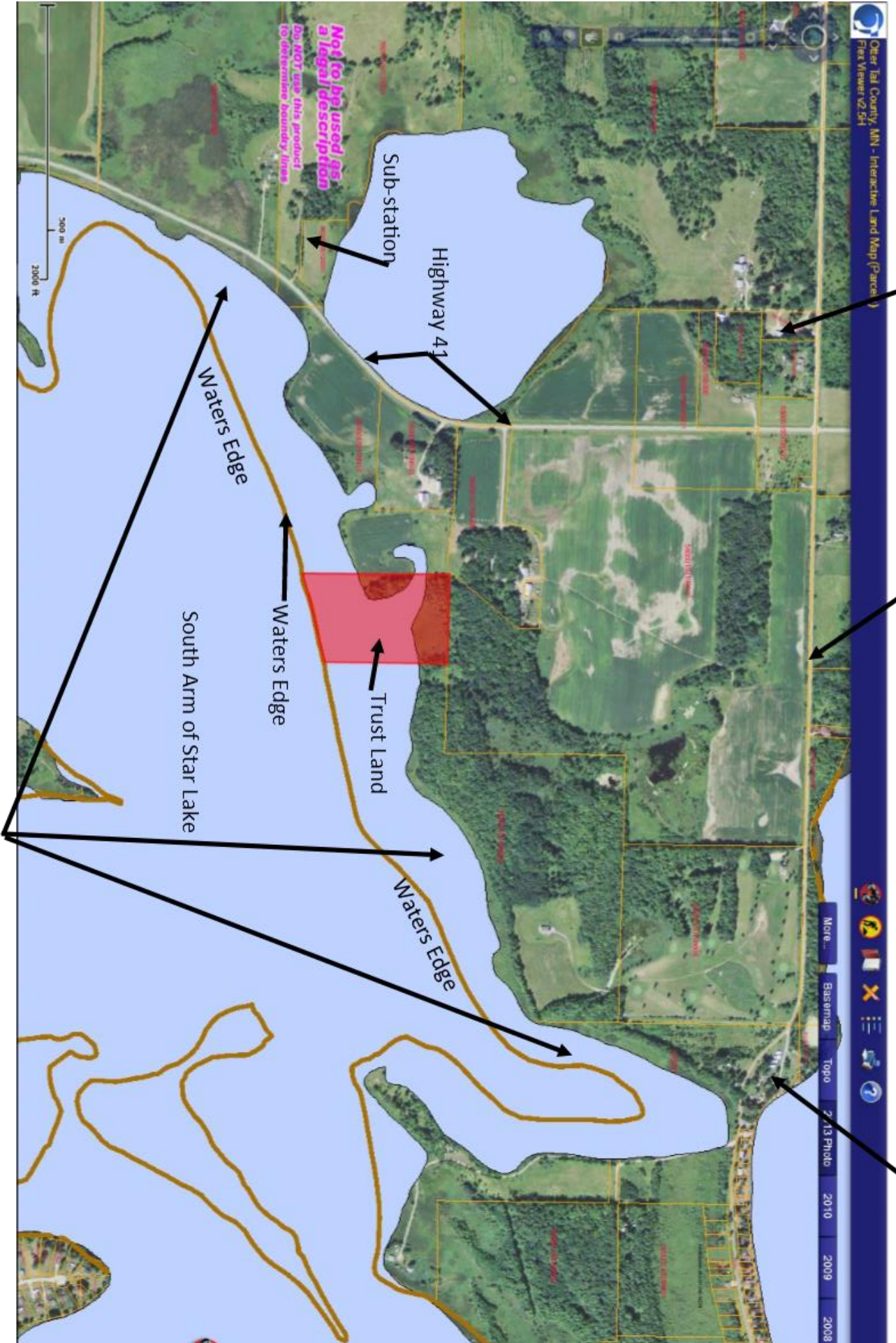
This Statement of Concern has been developed by a private group of concerned individuals that want to insure that all environmental impacts are properly addressed. This group is self-funded and is made up of residents, property owners, and others who share a concern for the future of Star Lake; many are members of the Star Lake Property Owners Assoc. (SLPOA) – some are not. The SLPOA Board has endorsed this statement of concern, and it is the sincere hope that the SLPOA Membership will as well at its upcoming annual meeting.

The environmental assessment processes have begun. At some point public comment will be solicited. By adding your name here, it will allow us to contact you quickly when your comments are needed. *Those comment periods will be short, so it is critical that when contacted you respond quickly to insure your voice is heard on this very important subject.* Many people have expressed frustration that they have been unable to express their opinions on this matter – these “Public Comment Periods” will be their chance to do so.

WILL YOU PLEASE JOIN US IN THIS IMPORTANT EFFORT?

Contact for questions or comments: Ty Dayton 218-251-1975

Mailing Address: SLCCG | P.O. Box 41, Dent, MN 56528



Town Hall

380th St./Camp Joy Road

Spruce Lodge

Sub-station

Highway 41

Waters Edge

Waters Edge

Trust Land

Waters Edge

South Arm of Star Lake

Do NOT use this product as a legal description to determine boundary lines

DNR Protected Wetlands and National Wetland Inventory